

# Great Lakes

## G R A P H I T E



Powering Markets with Vital Elements

Great Lakes Graphite Inc. is an industrial minerals company bringing carbon products to a well defined market through a vertically integrated supply chain. As pricing and demand continue to rise, Great Lakes Graphite will be one of the first new domestic suppliers to a growing regional customer base that requires high quality, valued-added graphite products.

### Products

#### Micronized Graphite

**Size:** 10-45 $\mu$

**Purity:** 94C to 97C

#### High Purity Micronized Graphite

**Size:** 10-45 $\mu$

**Purity:** 99.5C to 99.9C

#### Synthetic Graphite

**Size:** 10-45 $\mu$  or specification

**Purity:** 99.5C to 99.9C

### Markets

Drilling Fluids, Friction, Lubricants, Powder Metallurgy

Composites, Lubricants, Friction, Dispersions, Alkaline & Rechargeable Battery, Li-ion for EVs & energy storage

Drilling Fluids, Friction, Lubricants

## About Graphite



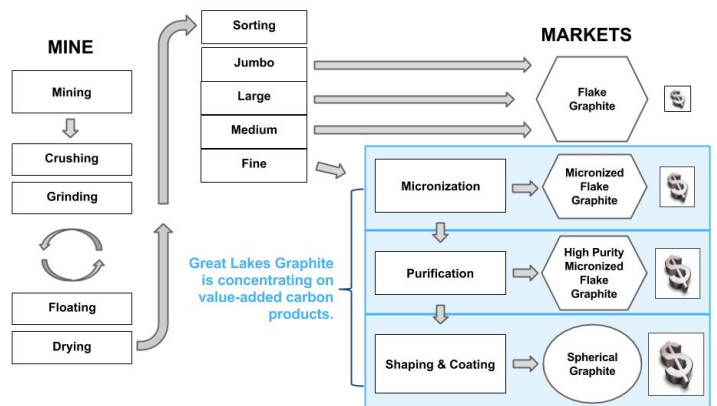
### Physical Properties

Strong  
Flexible  
Heat resistant  
Chemically inert  
Highly refractory  
High thermal/electrical conductivity

### Atomic Structure

**Graphite** is composed of a stack of carbon atom layers, each arranged in hexagonal groups resembling a chicken wire structure that form one atom thick “sheets” called graphene. Within a sheet, the covalent bonds between atoms are incredibly strong, whereas individual sheets are weakly attracted to each other by other forces, thus allowing sheets to cling together, yet slide over one another much like a deck of cards giving graphite its lubricity.

## Mine-To-Markets



# Great Lakes

## G R A P H I T E



Powering Markets with Vital Elements

### Qualification Timelines



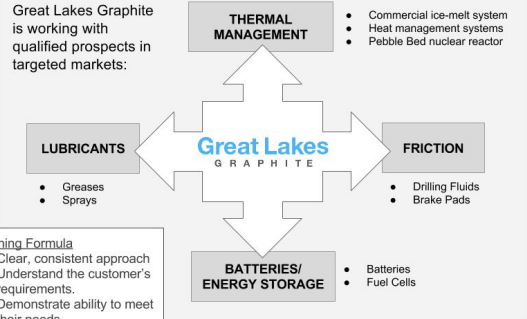
*Our phased approach is based on the longer qualification times that are required for higher value products.*

Spheronized Purified Graphite		Qual-1		Qual-2		Purchase	
Micronized Purified							
Micronized	Qual-1	Qual-2				Purchase	
Synthetic	Qual-1	Qual-2				Purchase	

*Sampling is typically done at bench scale and again at pilot scale before purchase orders are placed.*

### Replicating Success

Great Lakes Graphite is working with qualified prospects in targeted markets:

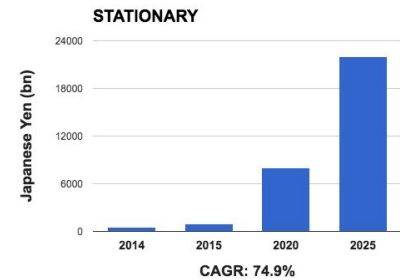
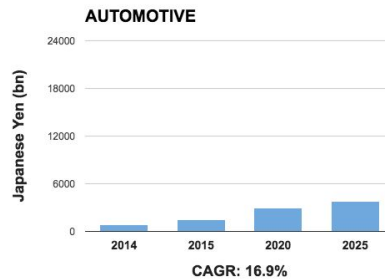


#### A Winning Formula

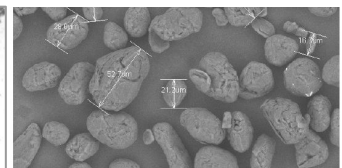
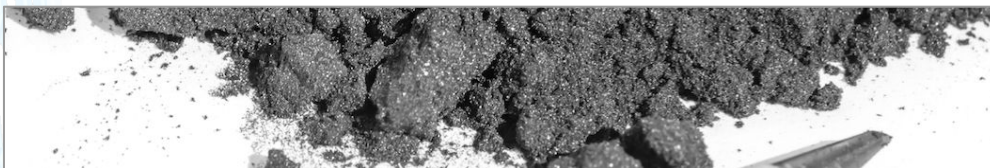
- Clear, consistent approach
- Understand the customer's requirements.
- Demonstrate ability to meet their needs.

### Batteries for EVs & Stationary

- BMW will be exclusively electric by 2025.
- VW's 'Strategy 2025' includes plans for over 30 electric car models in 10 years.
- Stationary applications are expected to grow several times faster than EV's.



Source: Panasonic Corp



### MANAGEMENT TEAM

Paul Gorman, CEO & Director  
 Mike Coscia, Vice President of Sales  
 Paul Ferguson, CMO & Director  
 Dr. Gershon Borovsky, Chief Science Officer  
 Rob Suttie, CFO

### INDEPENDENT DIRECTORS

Richard Lane, Director  
 Laura Mottola, Director  
 Greg Murphy, Director  
 Tom Ukolowicz, Director

### SHARE STRUCTURE

Shares Issued 135.6 M  
 Warrants & Options 43.0 M  
 Market Capitalization CAD \$10.6 M  
 52 Week Low/High CAD 0.06/0.115

### CONTACT INFORMATION

82 Richmond Street East  
 Toronto, ON M5C 1P1 Canada  
 Tel: 800.754.4510